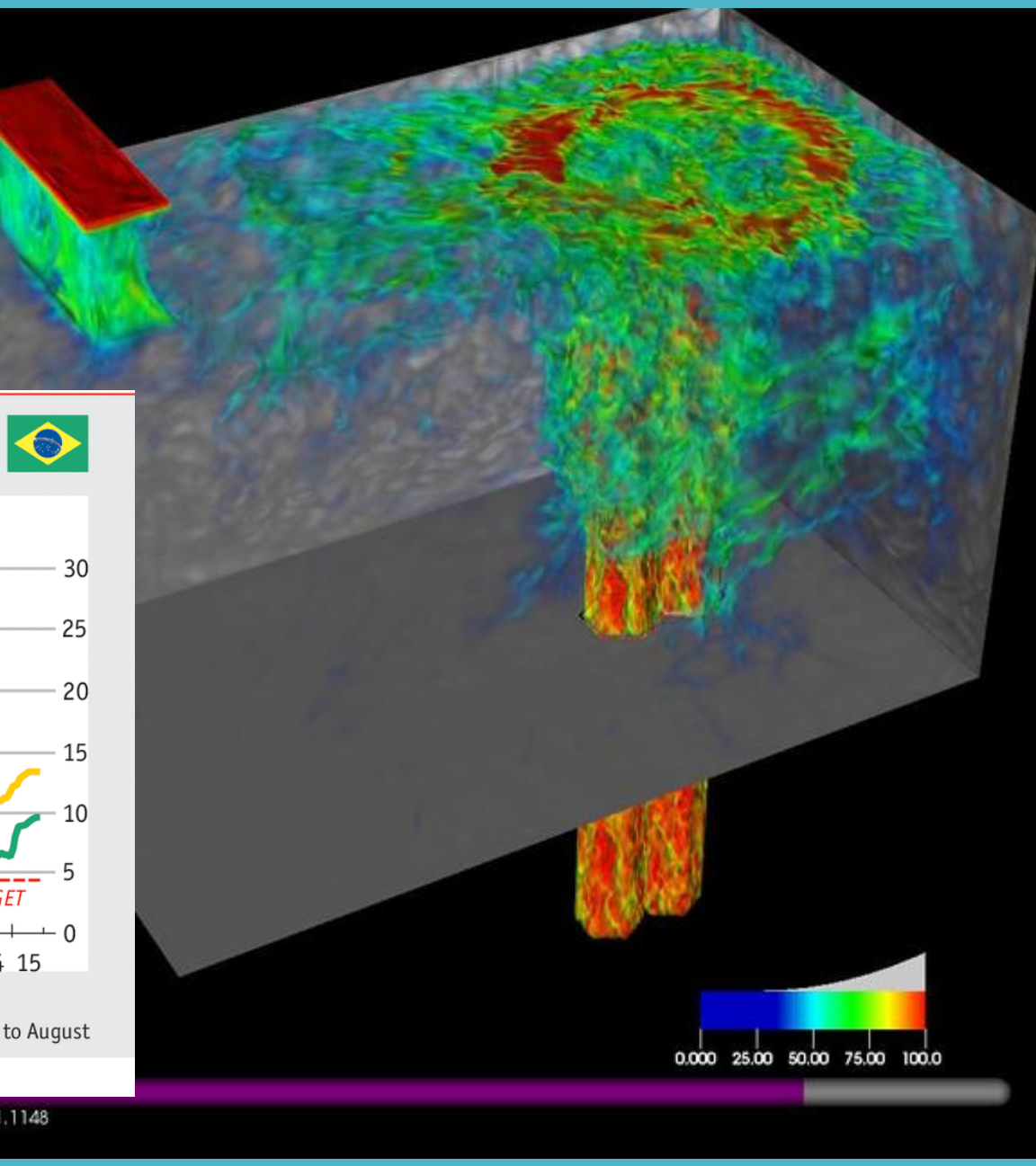
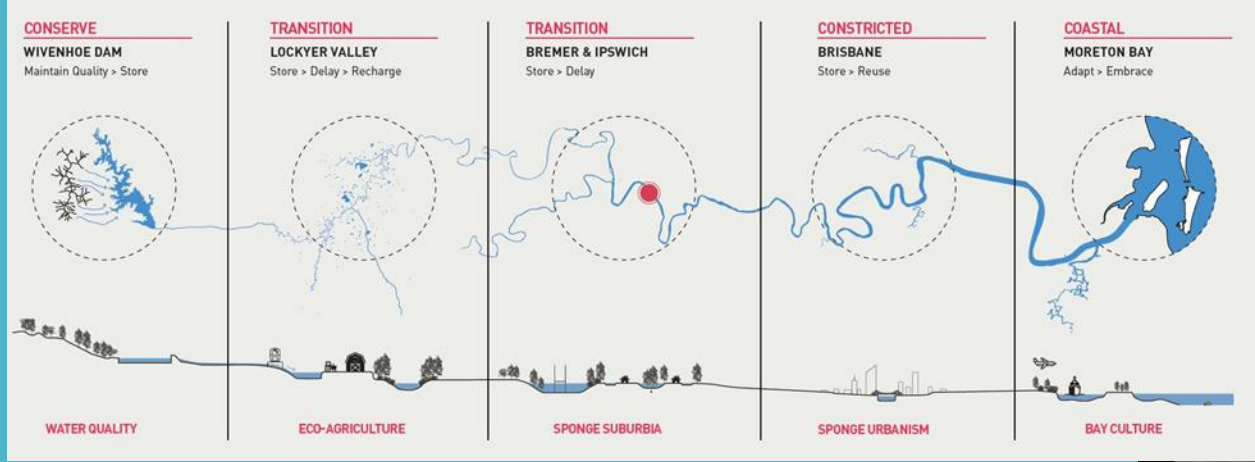




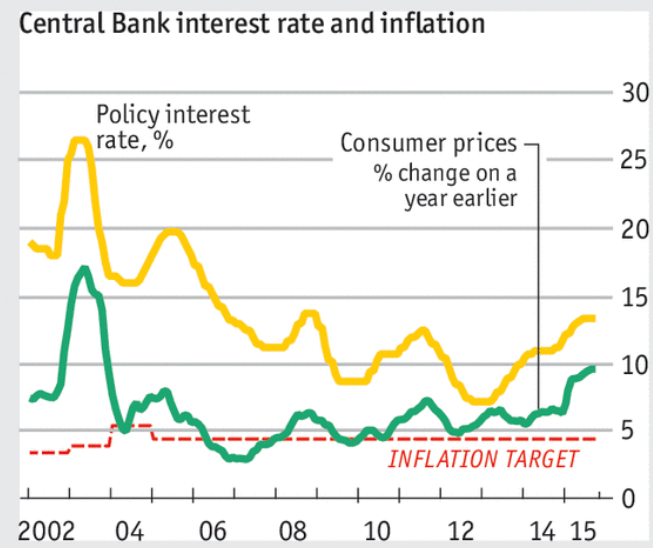
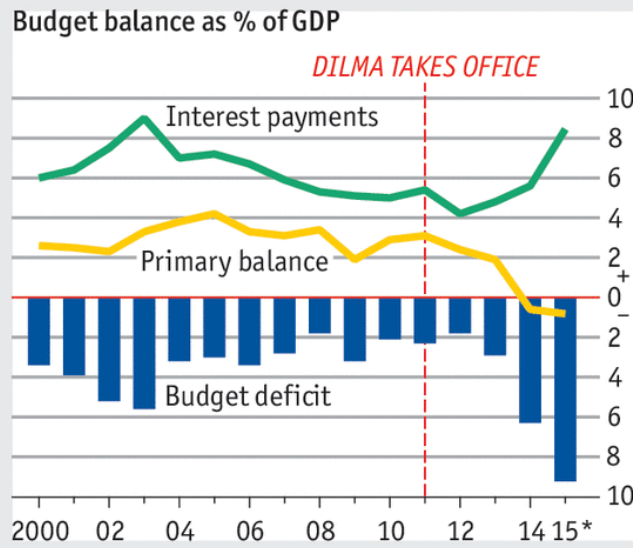
This Photo by Unknown Author is licensed under [CC BY-SA-NC](#)



This Photo by Unknown Author is licensed under [CC BY-SA](#)



Budget, interest and inflation



Sources: Economist Intelligence Unit; Thomson Reuters; Haver Analytics; Goldman Sachs; Central Bank of Brazil; Valor

*12 months to August

Economist.com

Time=51.1148



Connecting the landscape processes across different modelling scales from the top to the end of catchment

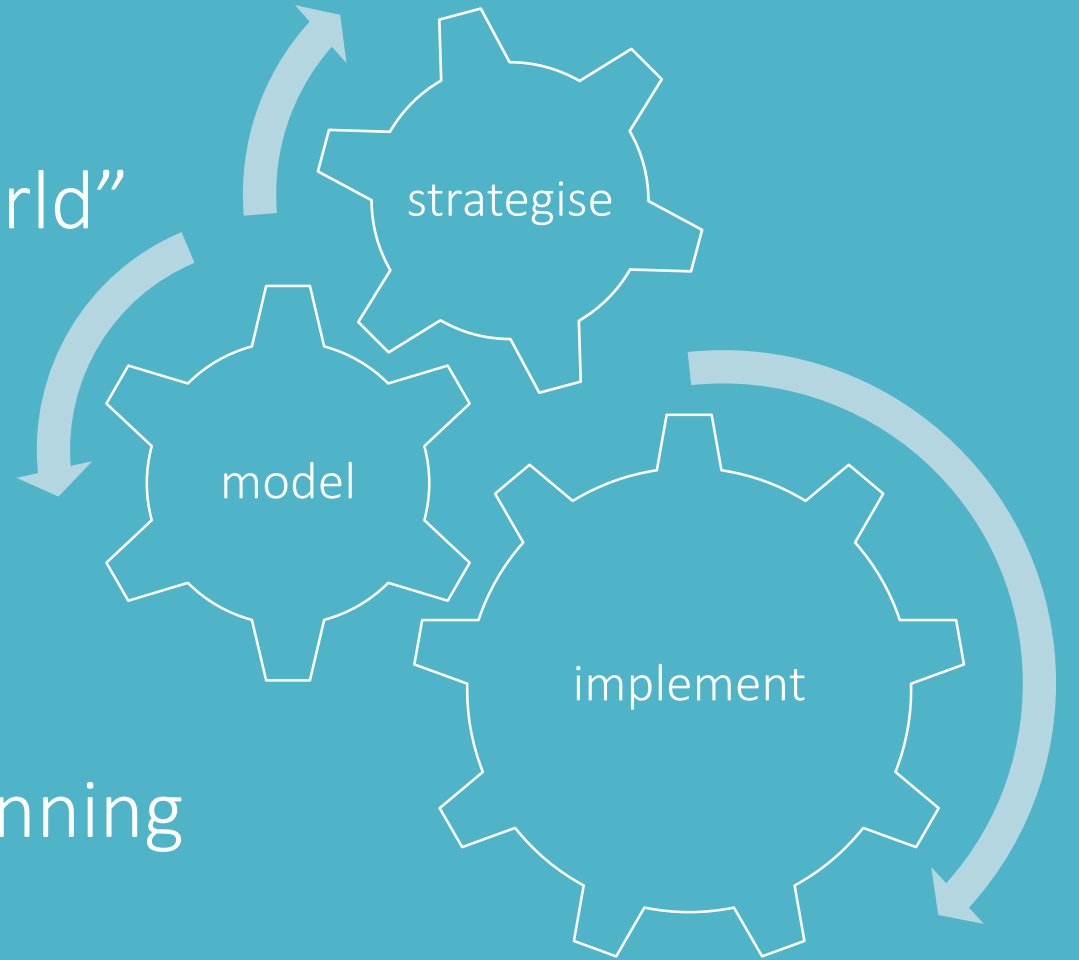
...to aid paddock management, prioritise investments and inform the achievement of strategic outcomes

WHAT

- ‘tools’ - process simulation
- representations of the “real world”
- depicting the “ideal”

HOW USED

- decision support tools –what-if
- management tools – digital twinning
- operating systems - SCADA



CONTEXT is everything!

-VUCA scenarios

CONNECTING everything

-Transects

COMMUNITY centric

-Interaction

Connecting... models, landscape processes, catchments, communities, value chain, management regimes, temporal (past with present and future), spatial (upstream-mid stream- down stream), scale (micro to macro)



How can we leverage existing resources to increase the effectiveness of environmental modelling to enhance communities?

This Photo by Unknown Author is licensed under [CC BY-NC-ND](#)