

‘Good models start with great data’

QWMN Forum 2020



Hydrographic Support Unit (HSU)



- Divisional Support, Water
 - Regional QMS – ISO 9001:2015
 - HSU QMS – ISO 9001:2015
 - HSU OHSMS – AS/NZS 4801:2001
 - Formal transition to ISO 45001:2018 in May 2020
- Water Monitoring Information Systems, LSI
 - Corporate data storage
 - Data publishing to WMIP
 - Pipeline feeds to water modellers



Water Monitoring Information Portal

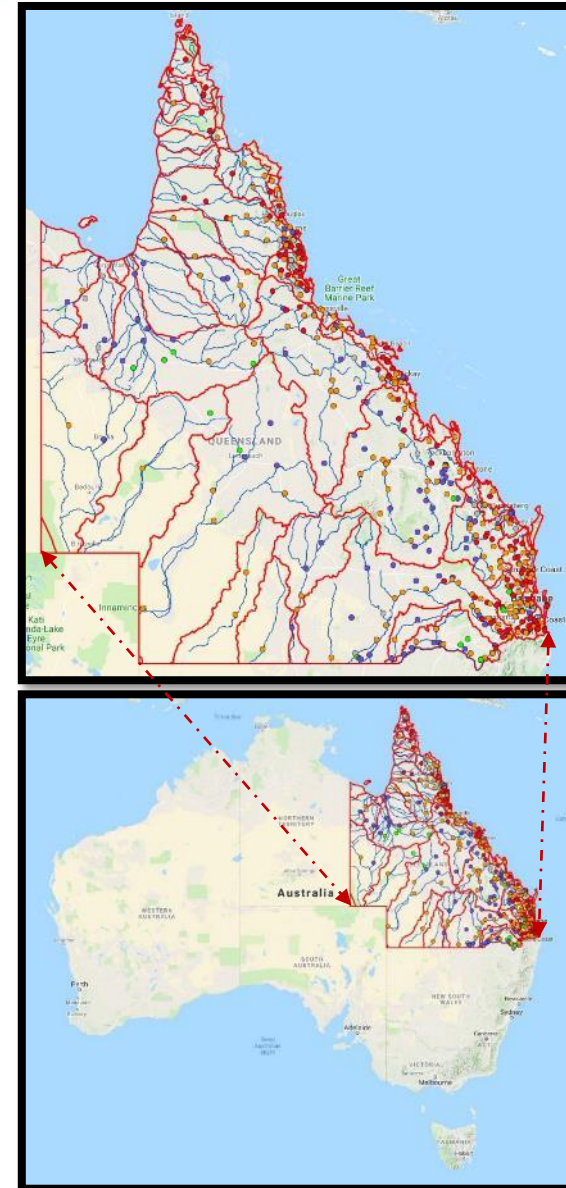


<https://water-monitoring.information.qld.gov.au>

Current telemetry deployment:

- Over 400 streamflow sites
- Over 300 groundwater sites
- 50 standalone pluvio sites

Modern, fit for purpose network for the provision of timely, reliable and accurate data.



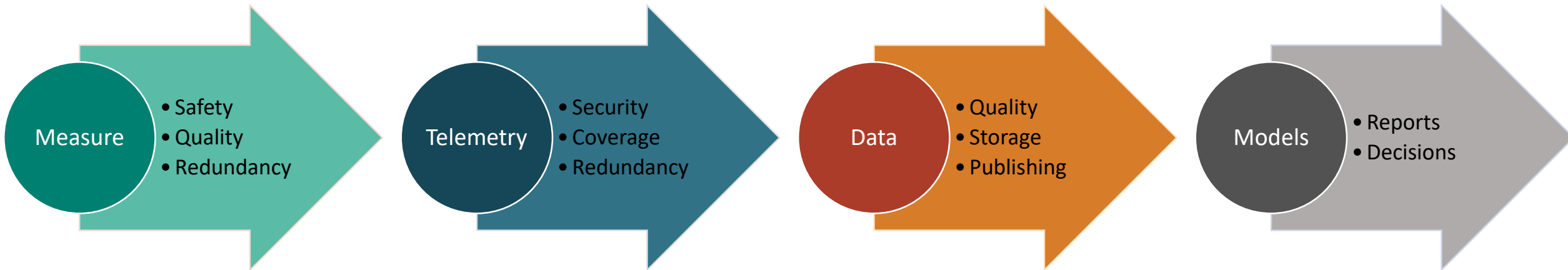
Shared Sites/Modelling



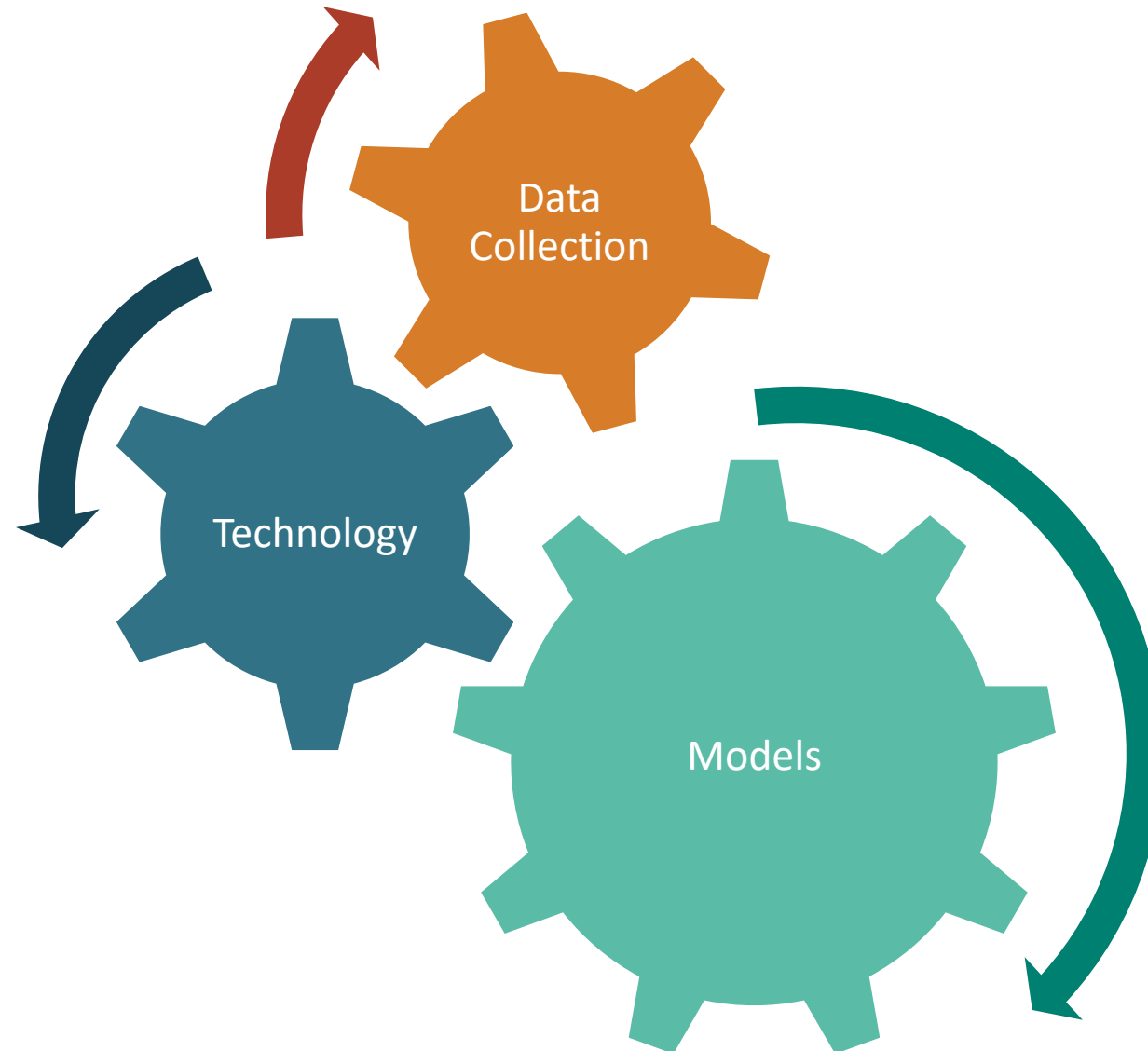
- Bureau of Meteorology (BOM)
- Local Councils
- SEQ Water
- Water Allocations
- Dam Design/Operation
- Resource Operational Plans
- Flood Warning
- Water Quality
- Sediment Loads
- Aquaculture
- Road/Bridge Design



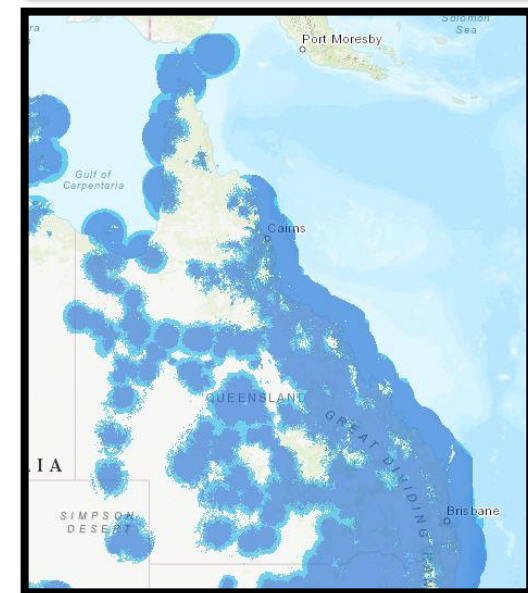
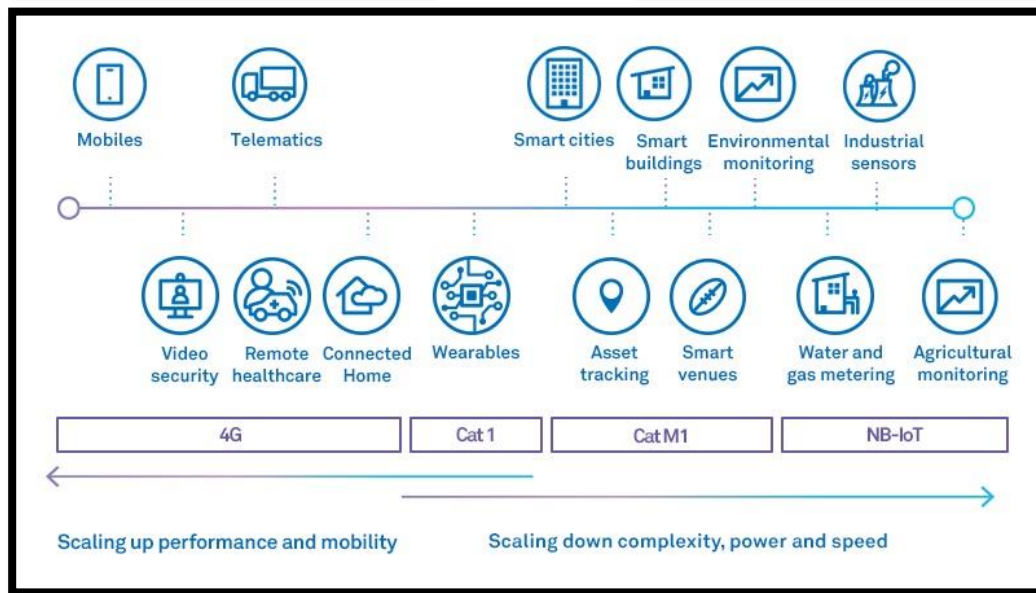
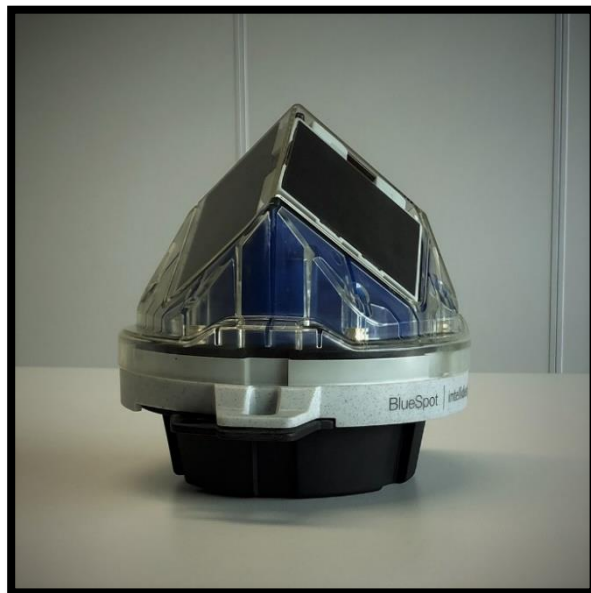
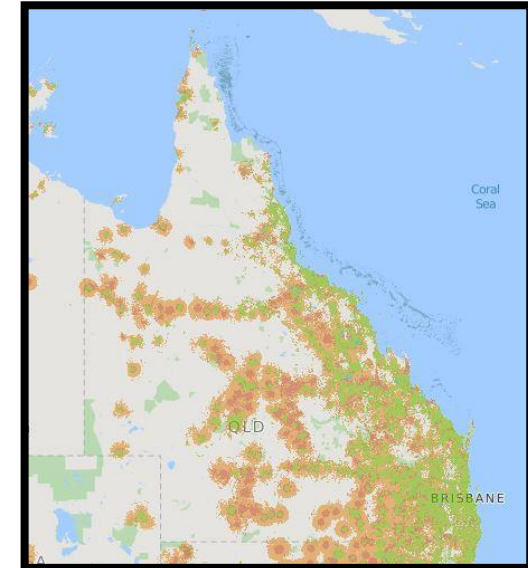
Our Pipeline Model



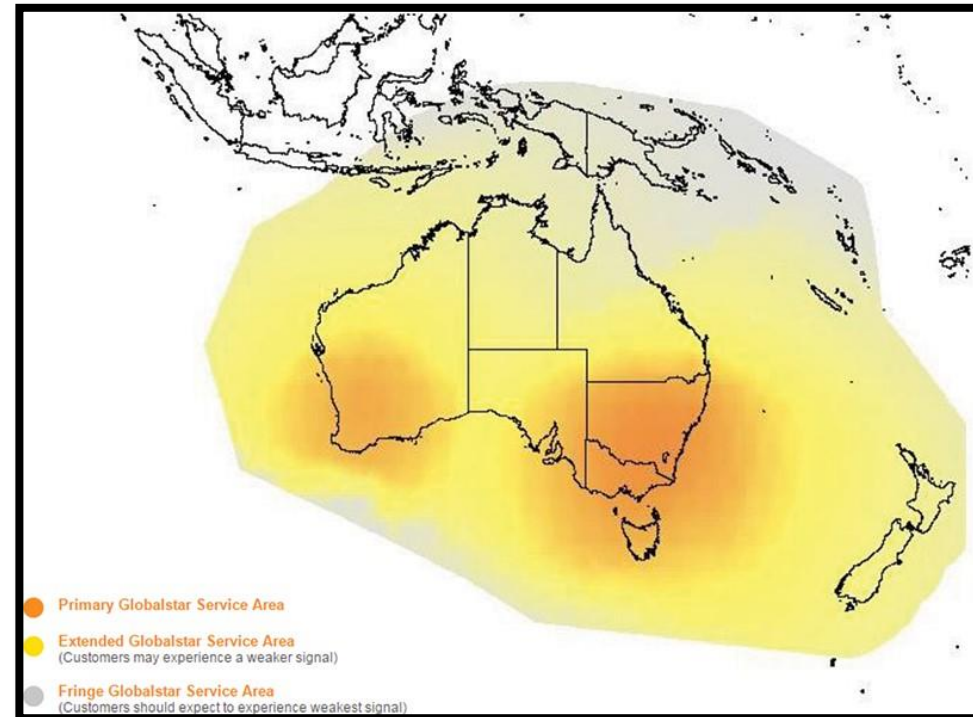
Key Challenges



Cat M1 & Narrowband (NB1) IoT



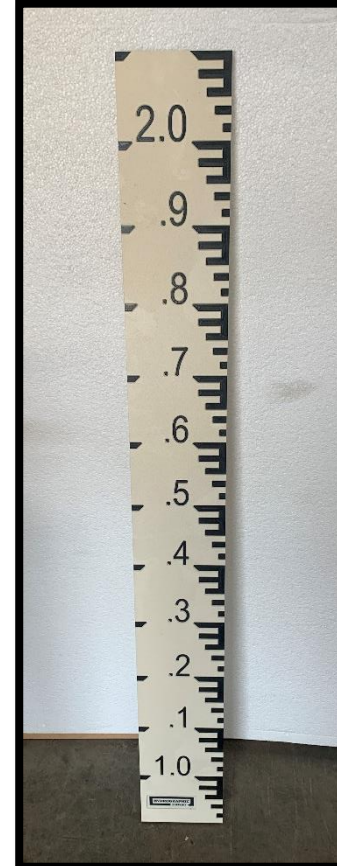
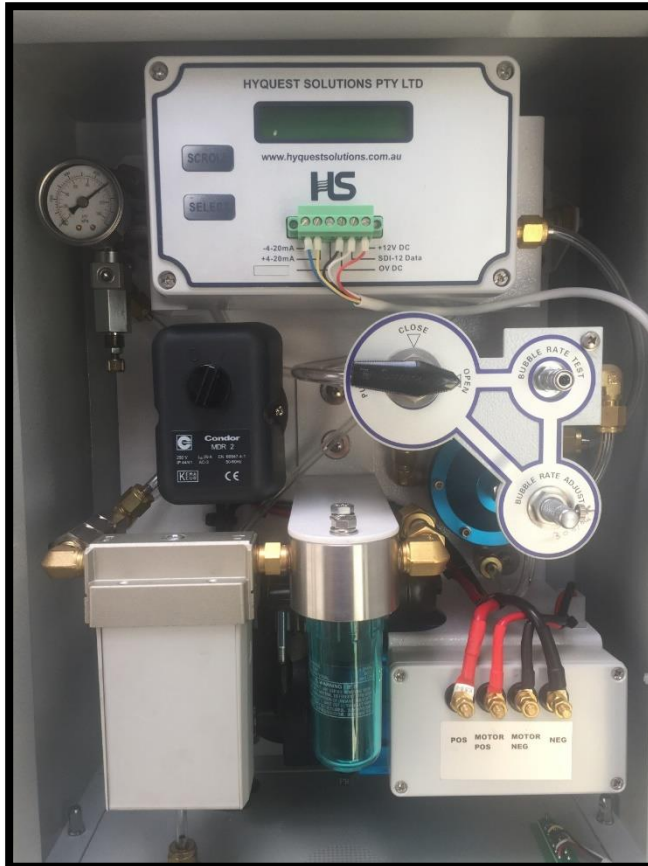
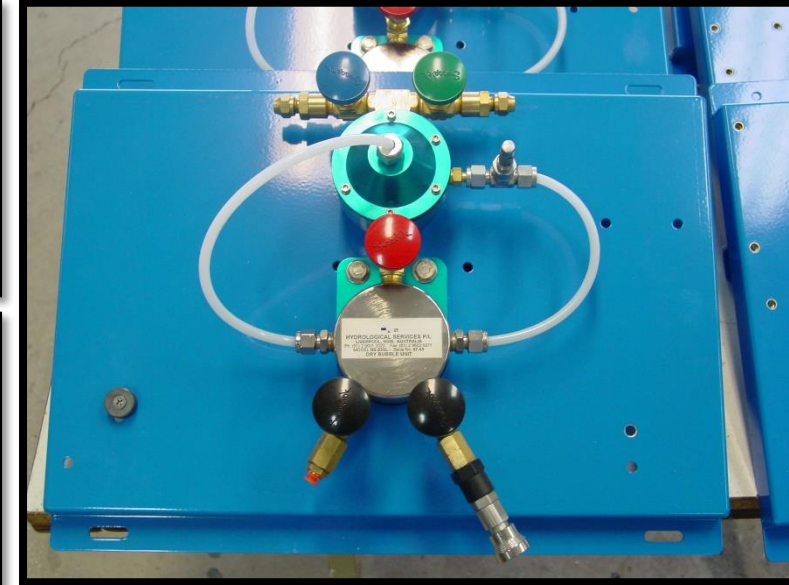
Satellite Telemetry



Standalone Pluviograph (Rainfall)



Water Level Measurement



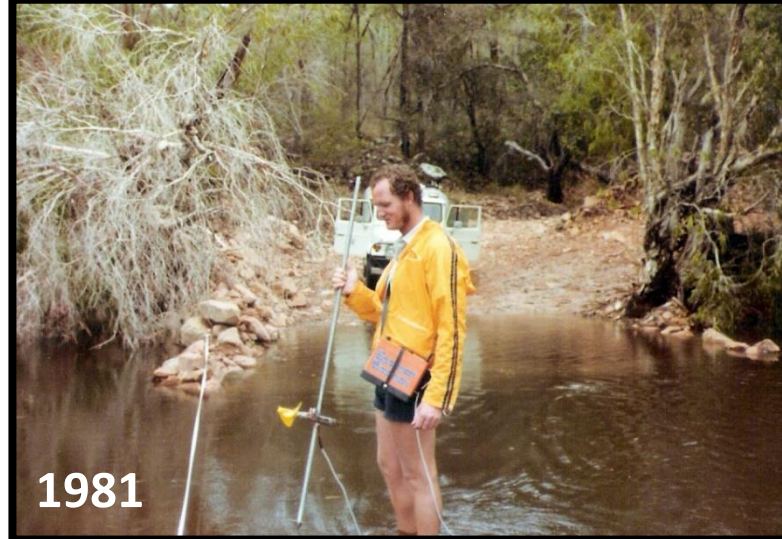
Stream Gauging



1948



1981



2000's



Doppler



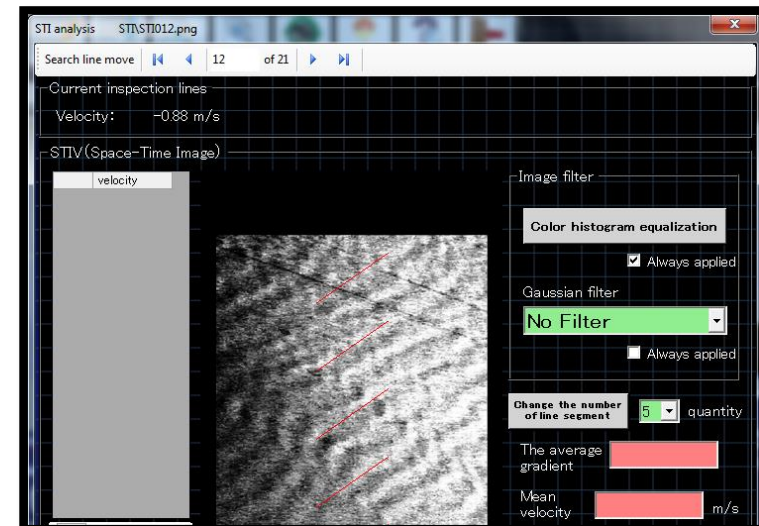
RC Boat + Doppler



Camera



Space-Time Image Velocimetry (STIV)



Project Tethys 2019-2020



- Expand WMIS to cater for Doppler and video data
 - Automated and manual processing
- Capability for automated monitoring of logger network health
 - Daily 'heartbeat'
- Develop network management tool
 - Health dashboard
- Corporate API link to Telstra Data Hub
 - IoT data cloud
- Develop low-cost monitoring systems
 - Field deployment of IoT devices



Future Goals

- Non-contact Flow Measurement
 - Cameras
 - Image processing for level data
 - STIV processing for discharge
- Suspended Sediments
 - Acoustic Dopplers
 - Time series data
- Micro Satellites
 - Lower cost data packets
 - Higher uptime



Final Challenge

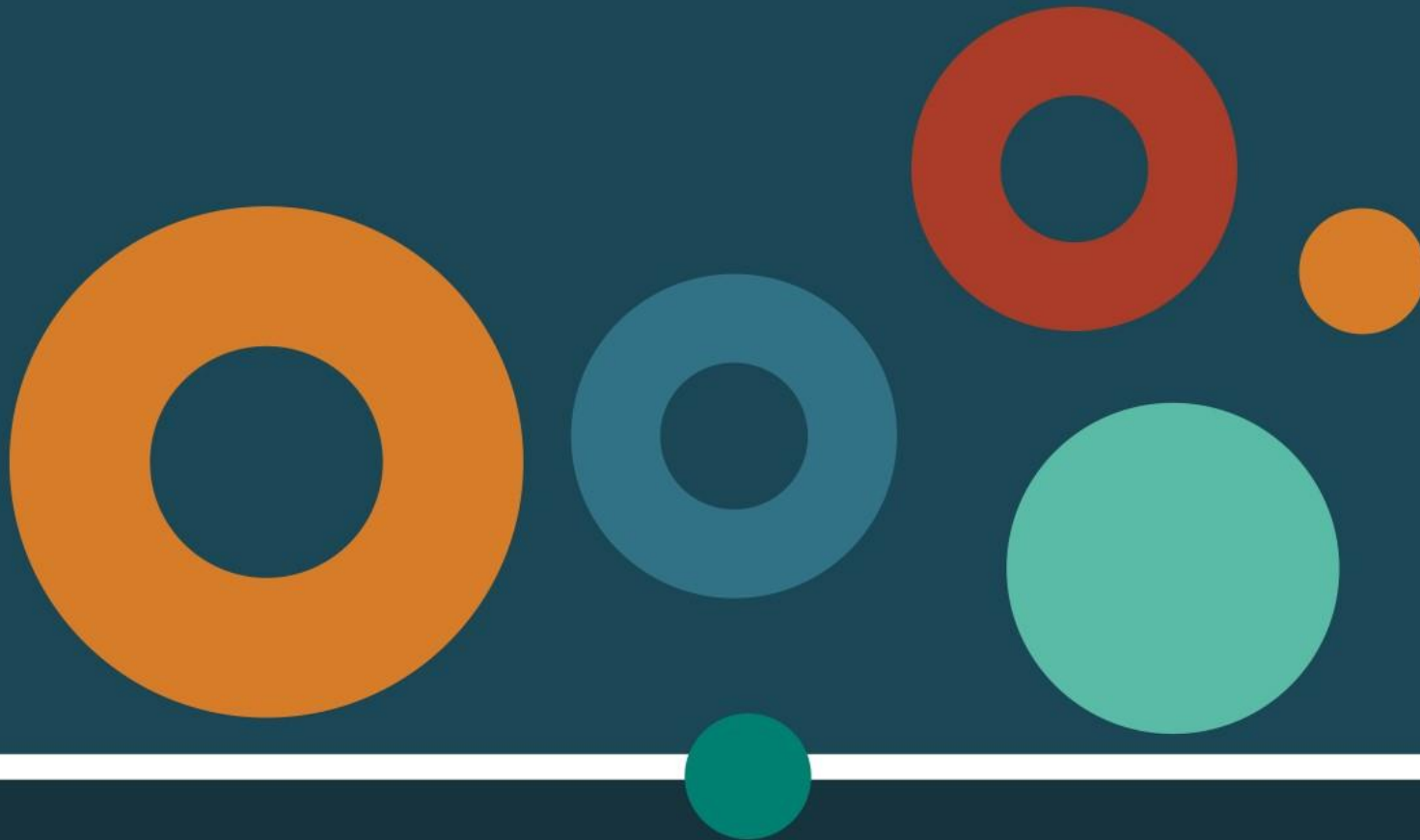
- Sharing knowledge and collaboration
 - Working with local councils
 - Developing with industry
 - Telstra, Myriota
 - Pacific Data Systems, mIoT, Halytech, IntelliDesign
 - Teaming up with universities
 - Collaborating with other government departments
- **How can we help you access our data to improve your models?**



Questions?

Department of Natural Resources, Mines and Energy

Email: dejan.subaric@dnrme.qld.gov.au



1345 Ipswich Rd, ROCKLEA 4106