

Building Catchment Resilience

Modelling

2020 Queensland Water Modelling Forum

Dr Lindsay Bradford

Australian Rivers Institute



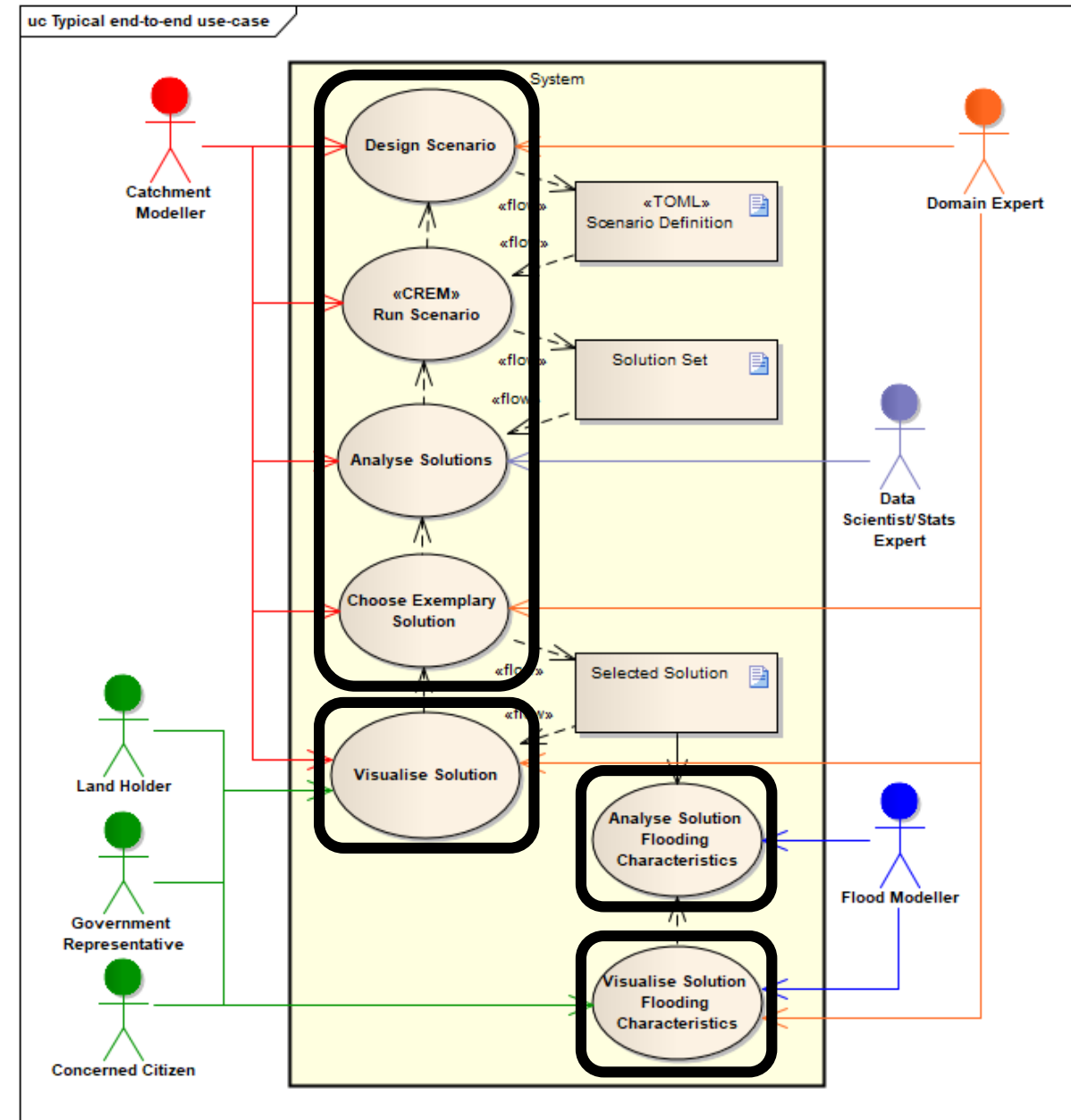
Aim: Stakeholder Engagement in Catchment Systems

- **Multiple Stakeholders:**
 - Government, Landholders, Scientists, etc...
- **Very different *objectives per stakeholder*:**
 - *Government*: Improve water quality...
 - *Landholder*: Maximise crop profit...
 - *Scientist*: Understand natural systems...
- **Objectives can compete, e.g.:**
 - Minimise sediment transport, but also
 - Minimise nutrient runoff, but also
 - Minimise implementation cost, etc...



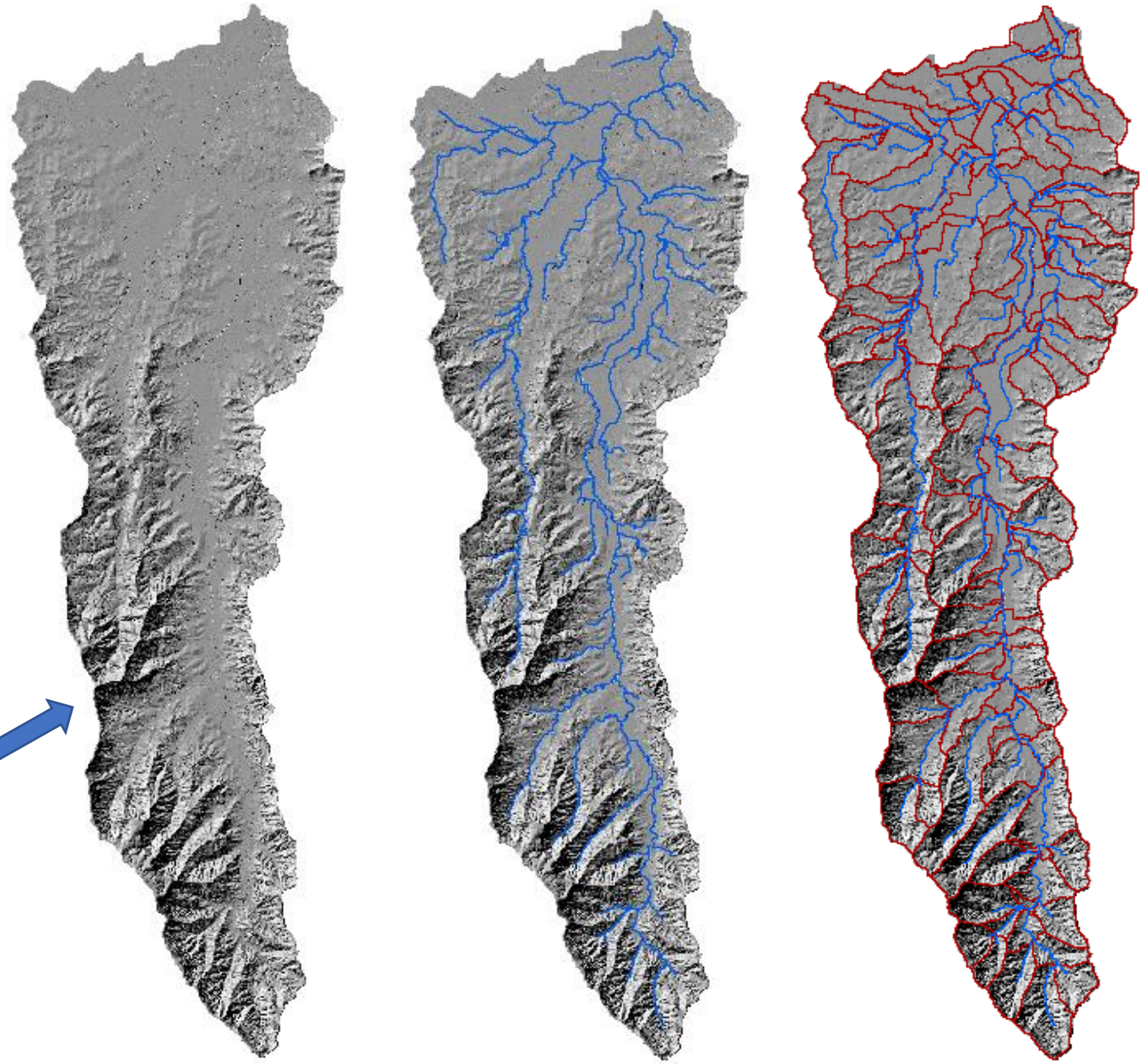
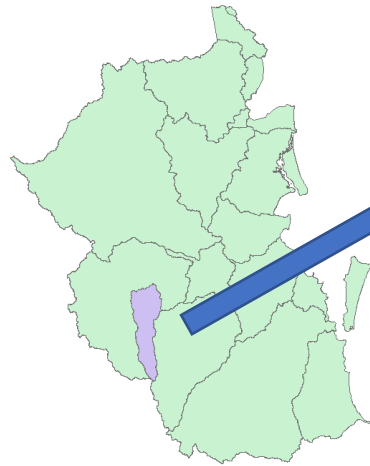
Decision Support System: Stakeholder Engagement

- Australian Rivers Institute (GU):
 - Catchment Model Construction
 - Model Solution Production
- Water Technology:
 - Flooding Impact of Model Solutions
- ViseR Group (QUT):
 - Scenario/Flooding Visualisation

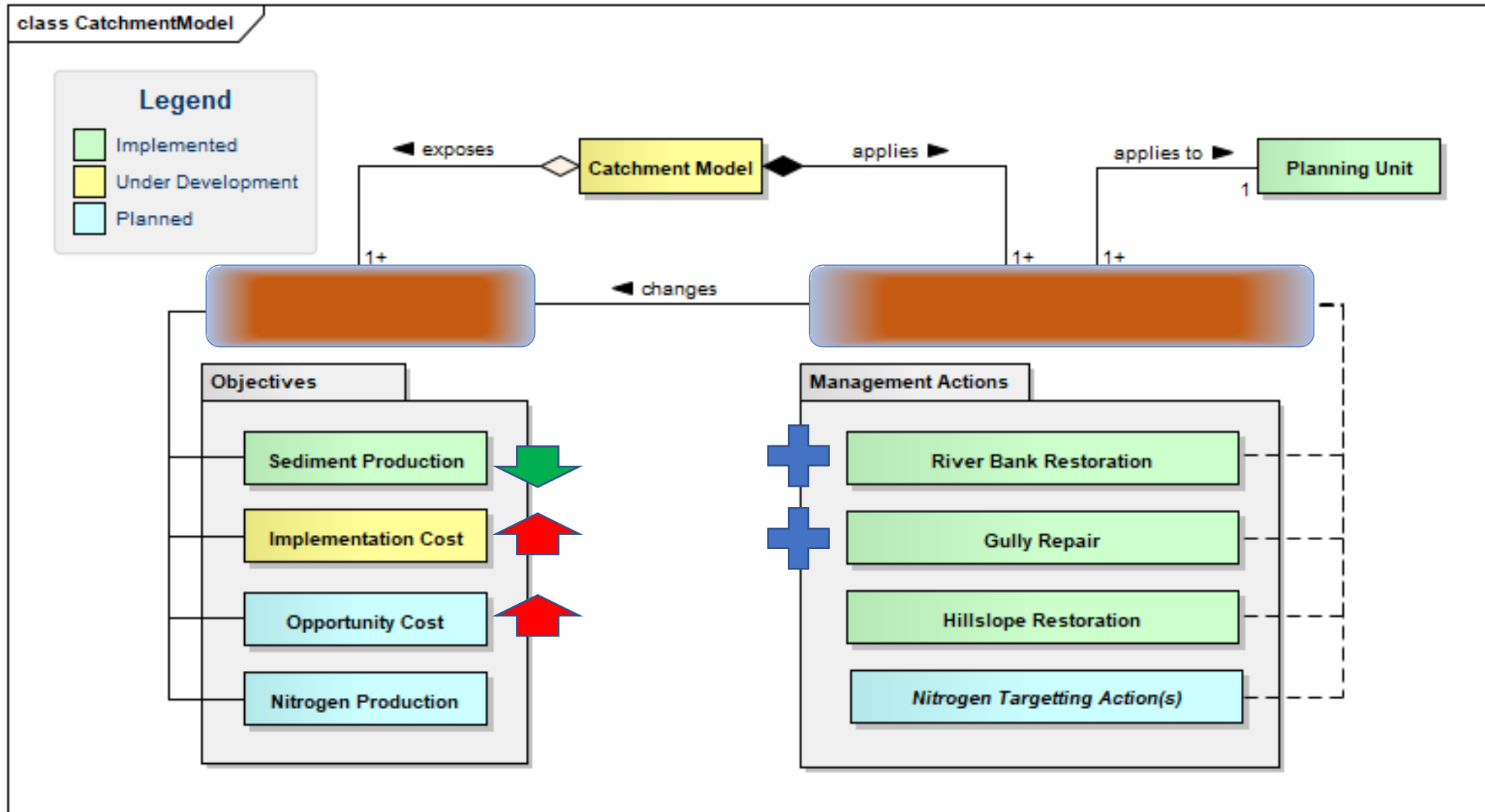


The Spatial Framework

- Laidley creek (~480 km²)
- Digital Elevation Model (1m²)
- River Data: Land usage, etc.
- 143 Planning Units (2-10 km²):
 - Water drainage characteristics of the river segments.



The River Catchment Resilience Model



Multi-Objective Simulated Annealing (MOSA)

- Allows us to explore **several objectives** evaluated at once:
 - Ideally at least one **objective per stakeholder**
- Produces a **set of solutions**:
 - One solution = **set of actions applied** to the catchment along with **measures of how they alter each objective**.
 - Demonstrate trade-offs between competing objectives to stake-holders
 - Help understand implications of management decisions in terms of stakeholder objectives.

